

EvaluatIR-M

- **Autonomous CO₂ Evaluation**
- **Real Time Recordings of CO₂ Levels**
- **Measures Full Suite of Other Environmental Parameters**



About the EvaluatIR-M

The EvaluatIR-M evaluation kit provides users with a convenient way to evaluate GSS CO₂ sensor technology in an easy-to-use battery-powered package. The EvaluatIR-M integrates the ExplorIR®-M sensor module that uses patented NDIR solid-state LED optical technology to deliver consistent and accurate CO₂ measurements.

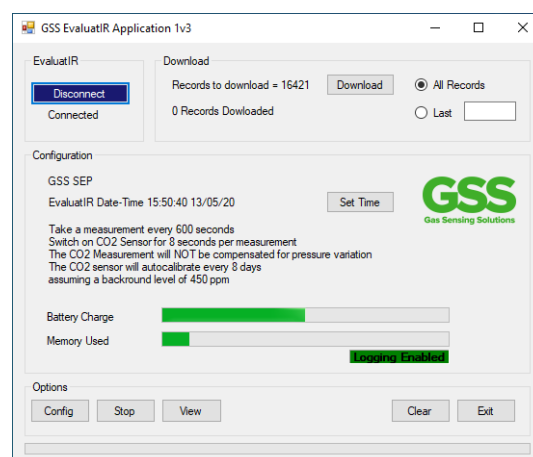
The evaluation kit measures CO₂ over a 0-20% or 0-100% range as well as relative humidity, temperature and barometric pressure. The evaluation kit connects to a PC via a USB port and includes software that allows the user to download the recorded data, in a format suitable for import into Excel or other data analysis tools. All recorded data is time-stamped allowing users to easily analyse CO₂ sensor behaviour.

The evaluation kit will operate for up to 12 months on 2 x AA batteries (not included).

In the Kit

- EvaluatIR-M Module
- USB Cable
- Evaluation Software
- Protective Carry Case

Software Interface



EvaluatIR-M

Ordering Information

EVALUATIR-M - X

x	Measurement Range
20	0-20%
100	0-100%

<https://www.gassensing.co.uk/product/evaluatir-m/>



CO₂ Sensor Specifications

Measurement Ranges	0-20%, 0-100%
Accuracy (typ.)	0-20% ±(70ppm +5% of reading) 0-100% ±(300ppm +5% of reading)
Response Time	2 Minutes (Diffusion limited)
Readings per Second	2
Sample Method	Solid-state LED NDIR Diffusion

Electrical and Mechanical Specifications

Measurement Output	USB Mini to PC Application
Power	2 x AA Batteries
Dimensions and Weight	145mm x 95mm x 35mm, 225g

Operating Conditions

Operating Conditions - Temperature	0°C to 50°C
Operating Conditions - Humidity	0-95% RH, non-condensing
Storage Conditions - Temperature	-30°C to +70°C
Pressure Dependence	0.15% of reading per mbar
Sensor Lifetime	>15 years
Environmental Compliance	RoHS and REACH

Humidity Sensor Specifications

Humidity Measurement Range	0-95%
RH Accuracy@25°C	±3%
RH Repeatability @ 25°C	±1%

Temperature Sensor Specification

Temperature Measurement Range	0-50°C
Accuracy 0 - 50°C	±0.5°C
Repeatability @ 25°C	±0.1%

Pressure Sensor Specification

Pressure Measurement Range	50 – 110kPa
Accuracy 0 - 50°C	±0.4kPa
Repeatability @ 25°C	±0.05kPa