

EvaluatIR-M

- Autonomous CO₂ evaluation
- Real time recordings of CO₂ levels
- Measures full suite of other environmental parameters



About the EvaluatIR-M

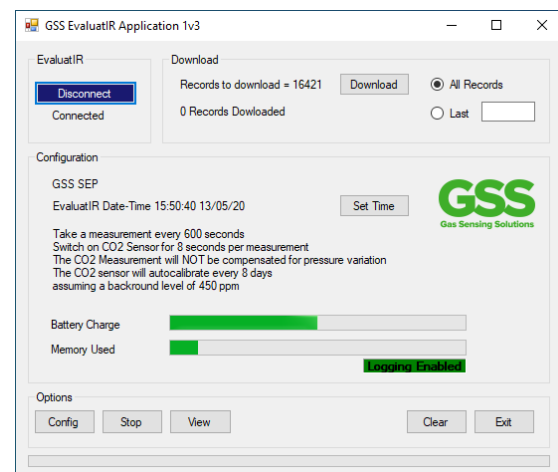
The EvaluatIR-M evaluation kit provides users with a convenient way to evaluate the GSS ExplorIR[®]-M CO₂ sensor in an easy-to-use battery-powered package. Inside, the ExplorIR[®]-M sensor uses patented NDIR solid-state LED optical technology to deliver consistent and accurate CO₂ measurements.

The EvaluatIR-M evaluation kit measures and records CO₂ over a 0-100% range as well as relative humidity, temperature, and barometric pressure. The evaluation kit connects to a PC via a USB port and includes software that allows the user to download the recorded data, in a format suitable for import into Excel or other data analysis tools. All recorded data is time-stamped allowing users to easily analyse CO₂ sensor behaviour. The evaluation kit will operate for up to 12 months on 2 x AA batteries (not included).

In the Kit

- EvaluatIR-M Sensor Module
- USB Cable
- Protective Carry Case

Software Interface



EvaluatIR-M

Ordering Information

EVALUATIR - M - X

x	Measurement Range
20	0-20%
100	0-100%



CO₂ Sensor Specifications

Measurement Ranges	0-20%, 0-100%
Accuracy (typ.)	0-20% ±(70ppm +5% of reading) 0-100% ±(300ppm +5% of reading)
Response Time	2 Minutes (Diffusion Limited)
Readings per Second	2
Sample Method	Solid-state LED NDIR Diffusion

Electrical and Mechanical Specifications

Measurement Output	USB mini to PC Application
Power	2 x AA Batteries
Dimensions and Weight	145mm x 95mm x 35mm, 225g

Operating Conditions

Operating Conditions – Temperature	0°C to 50°C
Operating Conditions - Humidity	0-95% RH, non-condensing
Storage Conditions - Temperature	-40°C to +70°C
Pressure Dependence	0.15% of reading per mbar
Environmental Compliance	RoHS and REACH

Humidity and Sensor Specification

Humidity Measurement Range	0-95%
RH Accuracy @ +25°C	±3%
Repeatability @ +25°C	±1%

Temperature Sensor Specification

Temperature Measurement Range	0-50°C
Accuracy 0- 50°C	±0.5°C
Repeatability @+25°C	±0.1°C

Pressure Sensor Specification

Pressure Measurement Range	50-110kPa
Accuracy 0- 50°C	±0.4kPa
Repeatability @+25°C	±0.05kPa